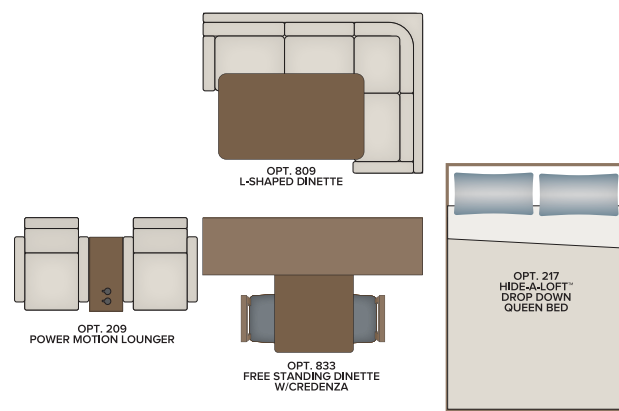
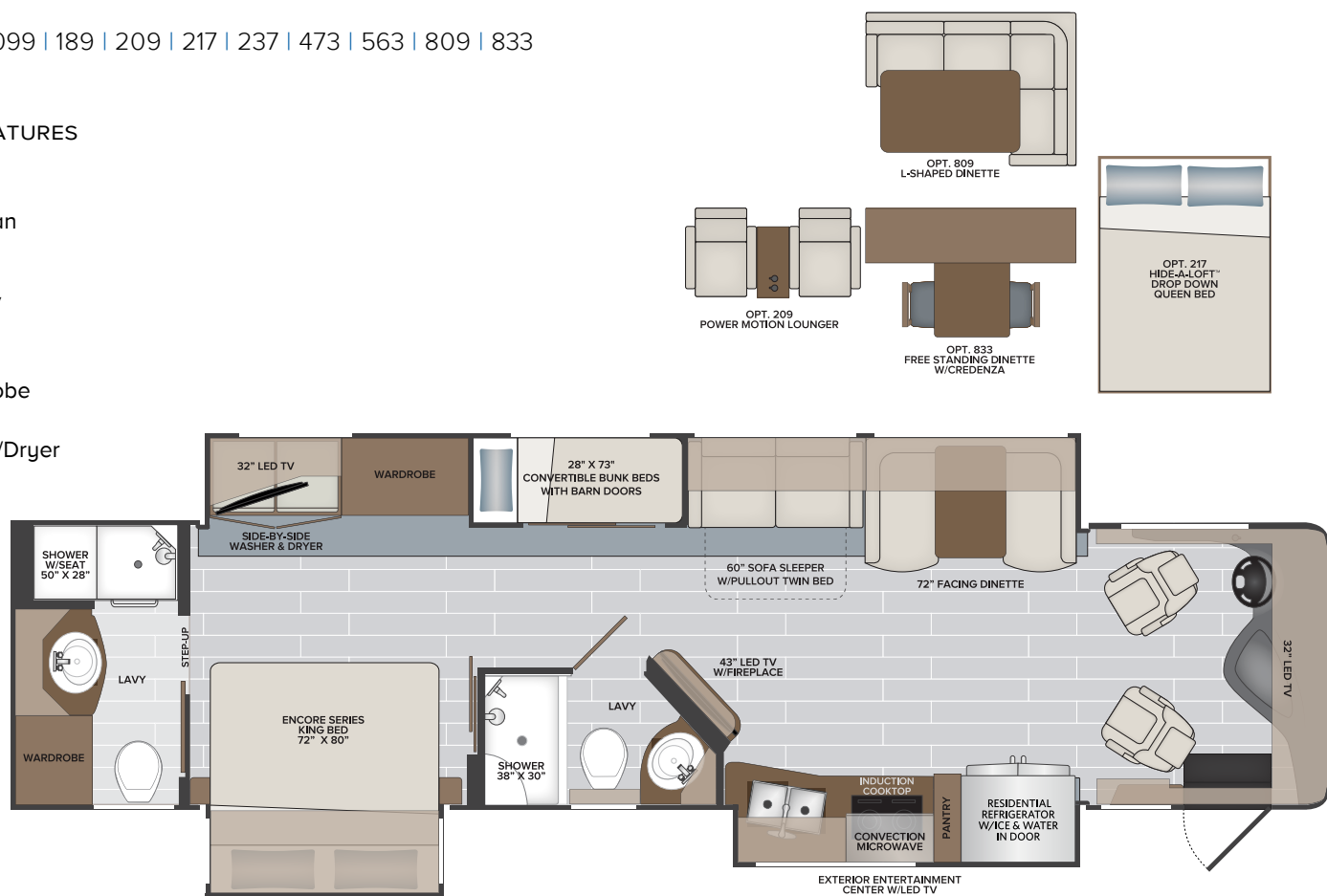


38N

Options: 099 | 189 | 209 | 217 | 237 | 473 | 563 | 809 | 833

TOP FLOORPLAN FEATURES

- Sleeps up to 9
- Two Full Lavys
- Front Galley Floorplan Layout
- Induction Cooktop
- Bedroom 32" LED TV
- Pull-Out Bed
- Bunk w/Barn Doors
Converts to a Wardrobe
- Full-size Wardrobe
- Side-by-side Washer/Dryer
- Articulating Bed
- Electric Fireplace



NAVIGATOR 38N OPTIONS

099	Satellite Delete	217	Hide-A-Loft™ Drop Down Queen Bed	563	Technology Package
189	Power Passenger Seat w/Power Footrest	237	Third Roof AC	809	L-Shaped Dinette
209	Motion Power Lounge	473	Brakesync — NEW	833	Free Standing Dinette

TITAN BRIDGE® CHASSIS
 Model: Freightliner® XCM Series
 Engine: Cummins ISB 6.7L
 Transmission: Allison® 2,500 MH 6-Speed w/Electronic Shifter
 Alternator: Delcom Remy 160 Amp
 Torque: 700 lb.-ft. @ 1,600 RPM
 Horsepower: 340HP



2022

Class A Diesel
NAVIGATOR

38N
FLOORPLAN