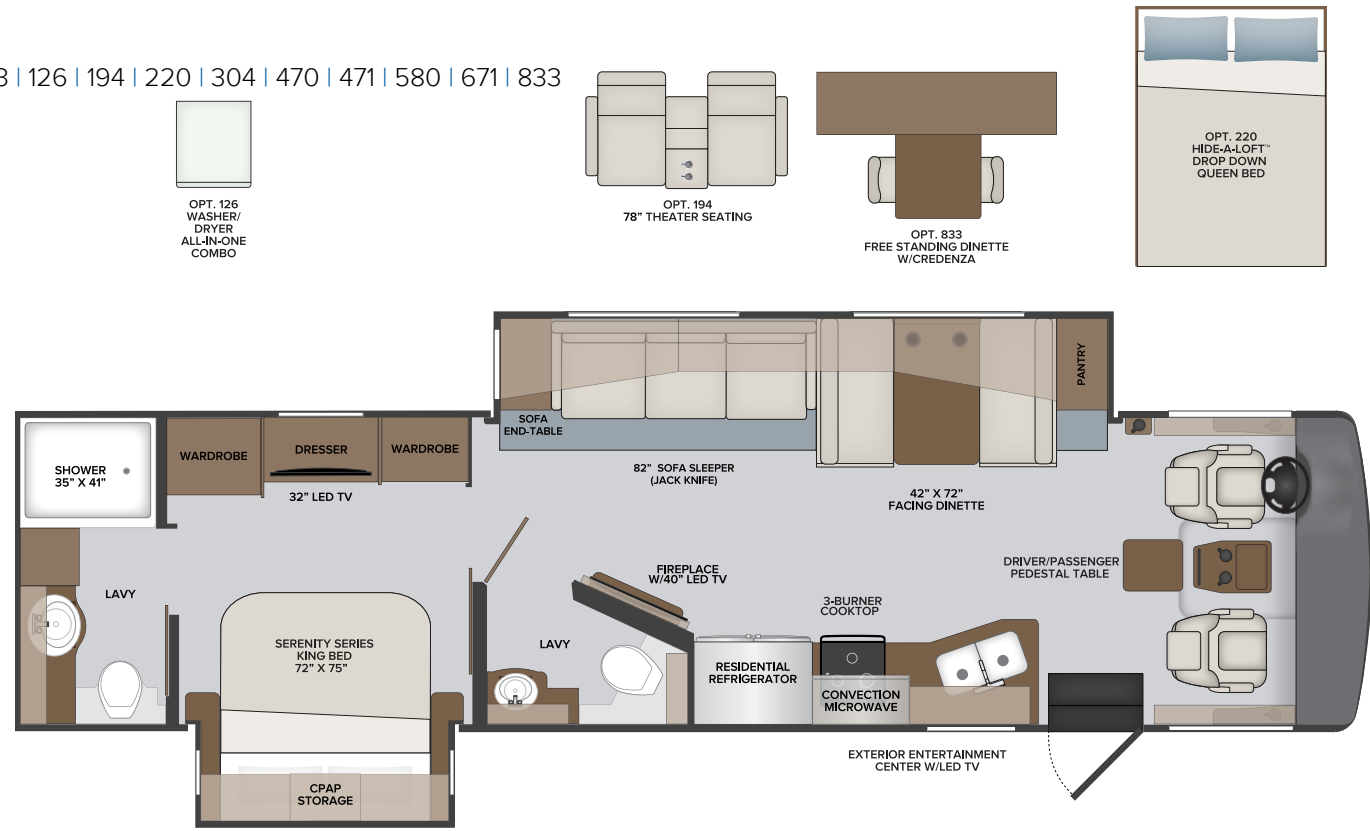


**35K**

Options: 089 | 096 | 113 | 126 | 194 | 220 | 304 | 470 | 471 | 580 | 671 | 833

**TOP FLOORPLAN FEATURES**

- Sleeps up to 6
- Residential Refrigerator w/French Door and Icemaker
- C-Pap Storage
- Power Entry Step
- Bus-style Luggage Doors
- Exterior Entertainment Center



OPT. 126  
WASHER/  
DRYER  
ALL-IN-ONE  
COMBO

OPT. 194  
78\"/>THEATER SEATING

OPT. 833  
FREE STANDING DINETTE  
W/CREENZA

OPT. 220  
HIDE-A-LOFT™  
DROP DOWN  
QUEEN BED

OPT. 113  
RANGE 3-BURNER  
DROP-IN W/OVEN

**VACATIONER 35K OPTIONS**

089	Upgraded WiFi Package	194	Theater Seating Sofa	580	Collision Mitigation
096	KING® Universal Satellite System	220	Hide-A-Loft™ Drop Down Queen Bed	671	Manual Power Cord Reel
109	Truma Tankless Water Heater	304	Solar Electrical Panel (265w)	833	Free Standing Dinette
113	Range -3 Burner Drop-in w/Oven	470	SumoSprings® - Front/Rear		
126	Washer/Dryer — All in one combo	471	Steering Stabilizer System		

**FORD® CHASSIS**

Model: Ford®

Engine: 7.3L Triton V8

Transmission: Ford® 6-Speed, Automatic w/Overdrive

Alternator: 175 Amp

Torque: 468 lb.-ft. @ 3,000 RPM

Horsepower: 350HP @ 3,900 RPM



**2022**

Class A Gas  
**VACATIONER**

**35K**  
 FLOORPLAN